

REVISIONS		
REV. NO.	DESCRIPTION	DATE

SIGNING & STRIPING CONSTRUCTION NOTES

ALL REGULATORY SIGNS SHALL HAVE HIGH INTENSITY SHEETING. THE HIGH INTENSITY SHEETING SHALL MEET THE REQUIREMENTS OF ASTM D4956-(LATEST REVISION) FOR TYPE III SHEETING.

ALL WARNING SIGNS SHALL HAVE FLUORESCENT YELLOW SHEETING. THE FLUORESCENT YELLOW SHEETING SHALL MEET THE REQUIREMENTS OF ASTM D4956-(LATEST REVISION) REQUIREMENTS FOR TYPE VIII SHEETING.

ALL GREEN AND BLUE SIGNS ON CONVENTIONAL HIGHWAYS SHALL HAVE HIGH INTENSITY SHEETING. THE HIGH INTENSITY SHEETING SHALL MEET THE REQUIREMENTS OF ASTM D4956-(LATEST REVISION) FOR TYPE III SHEETING.

ALL PANEL AND OVERHEAD SIGNS SHALL HAVE TYPE III HIGH INTENSITY BACKGROUND WITH TYPE VIII LEGENDS AND BORDERS. THE TYPE III BACKGROUND AND THE TYPE VIII LEGENDS AND BORDERS SHALL MEET THE REQUIREMENTS OF ASTM D4956-(LATEST REVISION).

THE MANUFACTURER SHALL FURNISH A TYPE 'A' CERTIFICATION IN ACCORDANCE WITH ODOT STANDARD SPECIFICATIONS, LATEST EDITION, and SUBSECTION 106.04. THE CERTIFICATION SHALL INCLUDE TEST RESULTS ON THE MATERIAL SUBMITTED FOR APPROVAL.

ALL BROKEN CONCRETE INCLUDING OLD SIGN FOOTINGS WITH STUBS, WASTE MATERIAL AND DEBRIS SHALL BECOME THE PROPERTY OF THE CONTRACTOR AND SHALL BE REMOVED FROM THE LIMITS OF THE PROJECT AND DISPOSED OF IN AN AREA APPROVED BY THE ENGINEER. NO PAYMENT SHALL BE MADE FOR THE DISPOSAL OF THIS MATERIAL. ANY PIPE POST OR WIDE FLANGE POST ABOVE THE OLD SIGN FOOTINGS SHALL BE CUT AND HANDLED AS PROPERTY OF THE STATE AND SHALL BE NEATLY STACKED ON THE JOB SITE, AS DESIGNATED BY THE ENGINEER UNTIL SUCH TIME AS DIVISION PERSONNEL CAN REMOVE THE MATERIAL FROM THE JOB SITE.

THE STATIONS AND LOCATIONS OF THE SIGN PLACEMENT, AS SHOWN ON THE PLAN SHEETS, ARE APPROXIMATE. EXACT STATIONS AND LOCATIONS SHALL BE DETERMINED BY THE CONTRACTOR SO THAT THE SIGN IS INSTALLED IN ACCORDANCE WITH DEPARTMENT STANDARDS AND THE MUTCD IN ORDER TO PROVIDE OPTIMUM VISIBILITY TO THE ONCOMING/APPROACHING MOTORIST. IF A PROPOSED LOCATION CONFLICTS WITH OTHER SIGNS, UTILITIES OR OTHER ROADWAY FEATURES, THE ENGINEER SHALL BE NOTIFIED.

POST LENGTHS SHOWN ON SIGN SUMMARY ARE APPROXIMATE, EXACT LENGTH SHALL BE DETERMINED BY FIELD SURVEY BY THE CONTRACTOR.

REMOVED MATERIAL TO BECOME PROPERTY OF CONTRACTOR AND IT SHALL BE DISPOSED OF IN A MANNER APPROVED BY THE RESIDENT ENGINEER.

AFTER REMOVAL OF ANY SIGN FOOTINGS, THE HOLES SHALL BE FILLED WITH SOIL AND TAMPED AND SHAPED IN A MANNER APPROVED BY THE ENGINEER.

TRAFFIC PAY QUANTITY NOTES

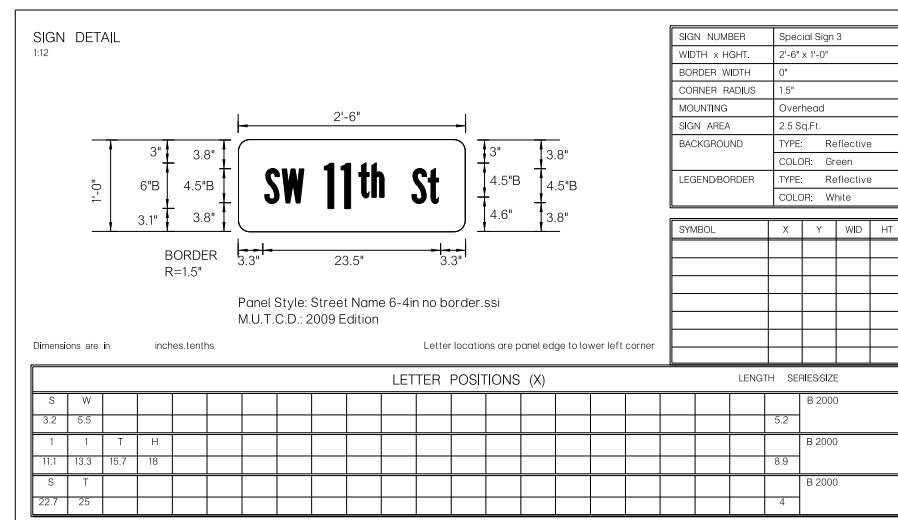
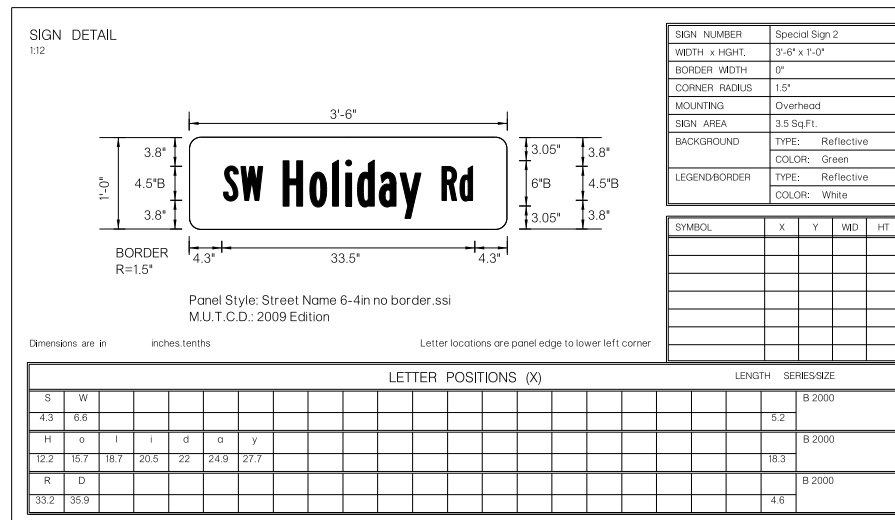
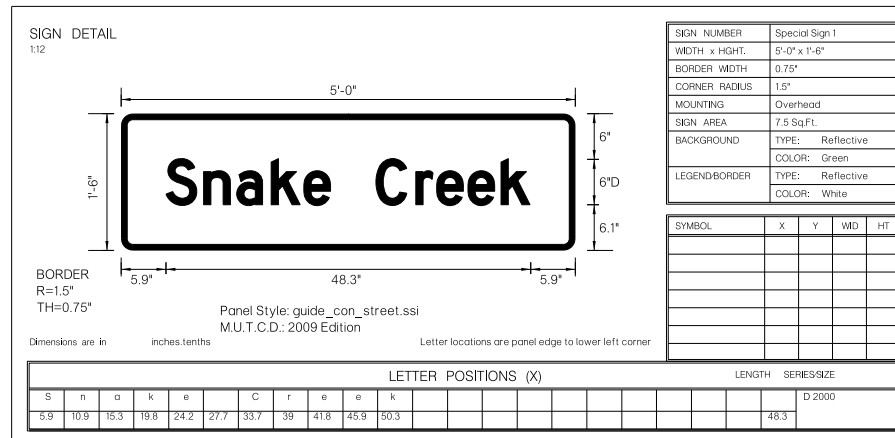
- (TC-13) A PART, OR ALL, OF THIS ITEM IS INTENDED FOR REPLACEMENT OF REMOVED EXISTING CONFLICTING STRIPING.
- (TC-14) SEE STANDARD DRAWING PM1-1, PM2-1, PM3-1, PM4-1, PM5-1, PM6-1, PM7-1, PM8-1 (LATEST REVISION). A PART, OR ALL, OF THE QUANTITY SHOWN IS TO BE USED AS FINAL PAVEMENT MARKING.
- (TC-22) AMOUNT SHOWN IS AN APPROXIMATION AND THE ACTUAL AMOUNT OF REMOVAL, IF NECESSARY, SHALL BE DETERMINED BY THE ENGINEER. PRICE BID FOR PAVEMENT REVISED MARKING REMOVAL SHALL INCLUDE THE COST OF REMOVING STRIPE, ARROWS, WORDS AND SYMBOLS, AS SHOWN IN THE PLANS. THESE ITEMS MAY CONSIST OF PLASTIC, PAINT OR NON-REMOVABLE MARKING TAPE.
- (TC-70) THIS ITEM IS AN ESTIMATED QUANTITY TO BE USED AS DEEMED NECESSARY BY THE ENGINEER.
- (TC-75) TEMPORARY PAVEMENT MARKINGS SHALL BE IN PLACE THE SAME DAY THAT EXISTING PAVEMENT MARKINGS ARE REMOVED FROM ANY ROADWAY OPEN TO TRAFFIC. ALSO, ALL TEMPORARY PAVEMENT MARKINGS SHALL BE REMOVED PRIOR TO THE INSTALLATION OF FINAL STRIPING.

TRAFFIC SIGNING PAY QUANTITY NOTES

- (TS-19) QUANTITY SHOWN INCLUDES 5,400 L.F. TRAFFIC STRIPE (PLASTIC)(WHITE) AND 5,400 L.F. TRAFFIC STRIPE (PLASTIC)(YELLOW) AND WILL BE MEASURED BY THE LINEAR FOOT OF FOUR INCH (4") WIDE TRAFFIC STRIPE.
- (TS-23) QUANTITY SHOWN INCLUDES 25 L.F. TRAFFIC STRIPE (PLASTIC)(WHITE) AND WILL BE MEASURED BY THE LINEAR FOOT OF TWENTY-FOUR INCH (24") WIDE TRAFFIC STRIPE.
- (TS-33) INCLUDED IN THIS PAY ITEM IS ALL HARDWARE ASSOCIATED WITH PROPERLY ANCHORING AND MOUNTING THE HIGHWAY SIGN IN ACCORDANCE WITH O.D.O.T. PLANS AND STANDARD DRAWINGS SSA1-1 AND SSP1-1-(LATEST REVISION).
- (TS-34) INCLUDED IN THIS PAY ITEM IS THE REMOVAL OF ANY EXISTING SIGNS TO BE REPLACED BY NEW ASSEMBLIES AND THE REMOVAL OF ANY EXISTING SIGNS THAT WILL BE IN CONFLICT WITH THE NEW ROADWAY OR NEW SIGNAGE.
- (TS-41) "REMOVAL OF EXISTING SIGNS" SHALL INCLUDE THE REMOVAL OF A COMPLETE SIGN ASSEMBLY WHICH MAY INCLUDE MULTIPLE SIGNS, POSTS, FOOTINGS, AND ANY FOOTINGS ADJACENT TO THE SIGN ASSEMBLY. WHEN APPROVED BY THE ENGINEER, FOOTINGS MAY BE OBLITERATED TO A POINT BELOW GROUND LEVEL IN LIEU OF BEING COMPLETELY REMOVED. SEE GENERAL CONSTRUCTION NOTES FOR DISPOSAL OF OLD CONCRETE FOOTING MATERIAL.

SPECIAL NOTES

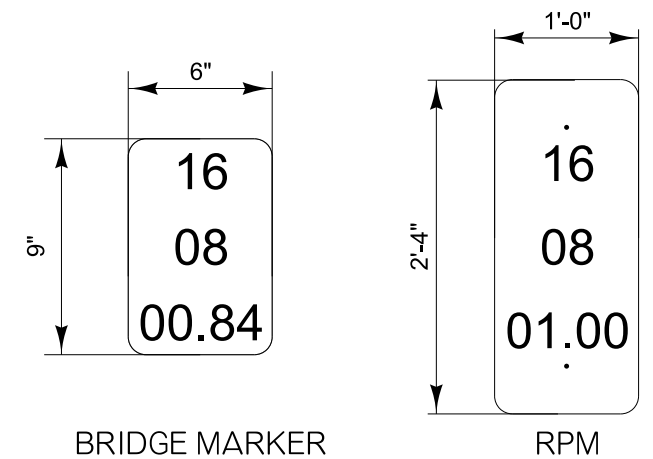
- (SP-1) THIS IS AN ESTIMATED QUANTITY TO BE USED FOR THE CENTER LINE AND IT IS BASED ON A DOUBLE YELLOW SOLID. THE CONTRACTOR SHALL COOPERATE WITH THE ENGINEER TO DETERMINE THE PASSING ZONE AREAS ALONG THE PROJECT. THE CONTRACTOR SHALL NOT START STRIPING UNTIL THE PASSING ZONE AREAS HAVE BEEN DETERMINED AND ARE DEEMED ACCEPTABLE BY THE ENGINEER.



PAY QUANTITY SCHEDULE

0301 TRAFFIC SIGNING & STRIPING				
PAY ITEM	CODE NO.	DESCRIPTION	UNIT	QUANTITY
413(A)	4861	RUMBLE STRIP-METHOD HMA-CON	LF	5,400.00
805(A)	8724	(PL)REMOVAL OF EXISTING SIGNS (TS-41)	EA	10.00
850(A)	8110	SHEET ALUMINUM SIGNS (TS-34)	SF	49.07
851(C)	8324	2" SQUARE TUBE POST (TS-33)	LF	114.00
855(A)	8812	TRAFFIC STRIPE(PLASTIC)(4" WIDE) (SP-1) (TC-13,14) (TS-19)	LF	10,800.00
855(A)	8825	TRAFFIC STRIPE(PLASTIC)(24" WIDE) (TC-13,14)(TS-23)	LF	25.00
857(F)	8006	PAVEMENT MARKING REMOVAL(TRAFFIC STRIPE) (TC-22,70,75)	LF	2,500.00

SUMMARY OF SIGN QUANTITIES FOR RURAL AREA REGULATORY SIGNS									
ITEM NO.	APPROXIMATE LOCATION	SIGN DESCRIPTION	TUBE POST		POST SPACING	SIGN AREA SHEET 850(A)	REMOVAL OF EXISTING SIGNS 805(A)	EA	REMARKS
			A	B					
1	107+00 RT	WB-13	14.00	0.00	0.00	6.25	1.00	REMOVE & REPLACE	
2	118+00 RT	SPECIAL SIGN 1	14.00	14.00	3.00	7.50	1.00	Snake Creek	
3	118+00 RT	OM-3R					1.00	REMOVE & DISCARD	
4	118+00 LT	OM-3L					1.00	REMOVE & DISCARD	
5	119+00 RT	OM-3L					1.00	REMOVE & DISCARD	
6	119+00 LT	OM-3R					1.00	REMOVE & DISCARD	
7	119+00 LT	SPECIAL SIGN 1 & BRIDGE MARKER	14.00	14.00	3.00	7.88	1.00	INSTALL BRIDGE MARKER ON BACK OF SPECIAL SIGN	
8	125+00 RT	WB-13	14.00	0.00	0.00	6.25	1.00	REMOVE & REPLACE	
9	126+00 LT	R1-1 & SPECIAL SIGN 2	14.50	0.00	0.00	8.68	1.00	REMOVE & REPLACE	
10	126+00 RT	R1-1, RPM, & SPECIAL SIGNS 2,3	15.50	0.00	0.00	12.51	1.00	REMOVE & REPLACE	
TOTAL			114.00			49.07	10.00		



PREPARED BY:
OKLAHOMA DEPARTMENT OF TRANSPORTATION
TRAFFIC ENGINEERING DIVISION
Kenneth Charles Dederling
KENNETH CHARLES DEDERING, P.E.
OKLA. REG. NO. 21077
DATE: 08-03-17

REGISTERED PROFESSIONAL ENGINEER
KENNETH CHARLES DEDERING
21077
OKLAHOMA

DIVISION 7 US-277	COMANCHE COUNTY	DETAIL: CLD	07/17
SUMMARY OF PAY QUANTITIES & NOTES (SIGNING & STRIPING)		CHECK: GF	07/17
		ENGINEER: KCD	07/17
GROUP: ABRAHAM EM: MAAROUF			